

Live Fresh



# GREENBURG

*The Luxury Show Apartment*





*Ultra Luxury  
Apartments*

*Sector 86, Gurgaon*





### Just think about...

- ...the security of being involved in a fully licensed & a fully approved project
- ...the satisfaction of exploring the sample flat on the very first day of project launch
- ...the feeling of confidence when home loans and allotment documents are available on the very first day you make the booking
- ...placing your trust in a company that assures superior quality and complete customer satisfaction
- ...the joy of anticipation, of watching the construction going on in full swing on the very first day of booking
- ...the contentment of building your future with a company that's financially capable of absorbing all unforeseen exigencies

While these idealistic promises may have only been possible in the realm of imagination, **Microtek Infrastructures Pvt. Ltd.** has made them a part of its reality.

A promise once made should be kept no matter what. And **Microtek Infrastructures** for its current project has tied up with **Larsen & Toubro (L&T)**, India's most respected technology, engineering, construction and manufacturing company in the private sector in order to utilize their expertise in the field of design and construction. Not only does **Microtek Infrastructures** in an active partnership with **L&T** assure you of an impeccably designed project; we will also ensure that the date committed for welcoming you to your new home, will not be extended by even a single day. We won't make you wait-it's a vow we shall not break!



Design & Construction by :  **LARSEN & TOUBRO**  
It's all about engineering





MASTER PLAN

# GREENBURG

Live Fresh



## LEGENDS

- 1. Guard Hut
- 2. Water Features
- 3. Flower Garden
- 4. Drop Off
- 5. Surface Parking
- 6. Badminton Court
- 7. Sunken Party Lawn
- 8. Existing Heritage Building
- 9. Fitness Court
- 10. Lawn Tennis Court
- 11. Kids Play Area
- 12. Golf Putting Greens
- 13. Basket Ball Court
- 14. Sitting Plaza
- 15. Yoga Garden
- 16. 2 Large Swimming Pools
- 17. Palm Court
- 18. Skating Rink
- 19. Proposed Villas
- 20. Herbal Garden
- 21. Amphi-theatre
- 22. Jogging Track
- 23. Nursery School
- 24. Pargolas
- 25. EWS
- 26. Ramp To The Basement
- 27. Shopping Complex
- 28. Cricket Pitch

Tower	Unit No.	Unit Type
A & B	1 & 2	4 BHK + Sq
C, D, E, F, K, L	1 & 4	3 BHK + Study + Sq
C, D, E, F, K, L	2 & 3	3 BHK + Sq
G, H, I, J	1, 2, 3 & 4	2 BHK + Study



## ART OF LUXURY LIVING

Greenburg's resplendent aesthetics is a visible commitment to luxury and acres of artistic greenery-be it the grassy golf course or the verdure manicured lawns or the refreshing water features. It's your chance to experience a slice of heaven, right here on earth.

- 75 percent apartments open to green
- 2 Large swimming pools
- Golf putting greens
- 3 side open apartments
- High-end luxury features & facilities
- 20000 sq. ft. high-end club

Live Fresh



Birds Eye View of Greenburg

**Refreshingly green,  
everyday!**





MARBLE CLADDING

SPACIOUS  
CORRIDORS



7.5 FT HEIGHT HARDWOOD DOOR FRAMES





**LARGE**  
LIVING & DINING

**ITALIAN  
MARBLE**



PREMIUM MODULAR KITCHEN

UTILITY  
BALCONY

PROVISION FOR  
BREAKFAST  
COUNTER





10.4 FT CLEAR HEIGHT FLOOR TO FLOOR

LAMINATED WOODEN FLOORING  
IN ALL BEDROOMS

AIR CONDITIONERS  
IN THE APARTMENTS

LARGE  
DRESSING AREAS











**JACUZZI TUB**

**FOUR FIXTURE  
BATHROOM**

Please Note - Jacuzzi bath tub in master bathroom of 3 BHK + ST + SQ units & 4 BHK + SQ units only



**GROHE / DURAVIT  
OR EQUIVALENT FITTINGS**





SPACIOUS  
BALCONY WITH EVERY ROOM



SS RAILING

TOUGHENED  
GLASS



PROPOSED SPECIFICATIONS FOR MICROTEK GREENBURG

SECTOR 86, GURGAON.

## 2, 3 & 4 BEDROOM APARTMENTS

### LIVING / DINING ROOM

**Walls**  
PLASTIC EMULSION PAINT

**Floors**  
ITALIAN MARBLE

**Doors**  
7.5 FT HARDWOOD DOOR FRAME WITH EUROPEAN STYLE FLUSH DOOR

**Windows**  
POWDER COATED ALUMINIUM / UPVC

**Electrical**  
MODULAR SWITCHES

**USP**  
SPLIT AIR-CONDITIONER

### BED ROOM

**Walls**  
PLASTIC EMULSION PAINT

**Floors**  
LAMINATED WOODEN FLOORING

**Doors**  
7.5 FT HARDWOOD DOOR FRAME WITH EUROPEAN STYLE FLUSH DOOR

**Windows**  
POWDER COATED ALUMINIUM / UPVC

**Electrical**  
MODULAR SWITCHES

**USP**  
SPLIT AIR-CONDITIONER

### KITCHEN

**Walls**  
2 FEET HIGH CERAMIC TILES ABOVE THE COUNTER. REST PAINTED WITH PLASTIC EMULSION PAINT

**Floors**  
ANTI-SKID CERAMIC TILES

**Doors**  
7.5 FT HARDWOOD DOOR FRAME WITH EUROPEAN STYLE FLUSH DOOR

**Windows**  
POWDER COATED ALUMINIUM / UPVC

**Electrical**  
MODULAR SWITCHES

**Sanitary**  
GRANITE / MARBLE COUNTERS. SS SINK WITH CP FITTINGS. PROVISION FOR GEYSER

**USP**  
PREMIUM MODULAR KITCHEN

### BATHROOM

**Walls**  
CERAMIC WALL TILES UP TO FALL CEILING LEVEL

**Floors**  
ANTI-SKID CERAMIC TILES

**Doors**  
7.5 FT HARDWOOD DOOR FRAME WITH EUROPEAN STYLE FLUSH DOOR

**Windows**  
POWDER COATED ALUMINIUM / UPVC

**Electrical**  
MODULAR SWITCHES. PROVISIONS FOR HOT & COLD WATER SUPPLY SYSTEM

**Sanitary**  
GRANITE / MARBLE COUNTERS. SINGLE LEVEL CP FITTINGS- GROHE / DURAVIT / ROCA / KOHLER OR EQUIVALENT

**USP**  
JACUZZI TUB IN MASTER BATHROOM OF 3 BHK + ST + SQ UNITS & 4 BHK + SQ

### SERVANT / UTILITY ROOM

**Walls**  
OBD

**Floors**  
CERAMIC TILES

### SERVANT / UTILITY ROOM (Cont.)

**Doors**  
7.5 FT HARDWOOD DOOR FRAME WITH EUROPEAN STYLE FLUSH DOOR

**Windows**  
POWDER COATED ALUMINIUM / UPVC

**Electrical**  
MODULAR SWITCHES

### SERVANT / UTILITY BATHROOM

**Walls**  
CERAMIC TILES & OBD

**Floors**  
ANTI-SKID CERAMIC TILES

**Doors**  
7.5 FT HARDWOOD DOOR FRAME WITH EUROPEAN STYLE FLUSH DOOR

**Windows**  
POWDER COATED ALUMINIUM / UPVC

**Electrical**  
MODULAR SWITCHES

**Sanitary**  
ISI CP FITTINGS

### BALCONIES

**Walls**  
OBD

**Floors**  
ANTI-SKID CERAMIC TILES

**Electrical**  
MODULAR SWITCHES

**Railing**  
SS WITH TOUGHENED GLASS

### LIFT LOBBIES

**Walls**  
OBD

**Floors**  
GRANITE / INDIAN MARBLE

### EXTERNAL FACADE

**Walls**  
PERMANENT TEXTURE / PAINT FINISHES / COMBINATION

### OTHER FACILITIES

- Single Point Control Panel for Electrical Points at the entrance
- Loft for storage
- Driver Toilets
- Provision for laundry & car washing
- Facility management service
- Dual billing meter

### SECURITY & TECHNOLOGY

- **Introduction of Fibre Optics** in your apartment, enabling single point control of multi dimensional utilities. Intelligent wiring. Single centralized hub in line with international standard is provided in each apartment so as to eliminate wire cluttering.
- **Power & Flexibility:** To select the service provider of your choice for Cable TV/DTH (Direct to Home TV), Internet, Fixed Telephone Line in the apartment.
- **IPTV Ready:** Infrastructure provided in each apartment in order to raise TV viewing to a whole new exciting world of interactivity and entertainment that is driven through choice, control and value. Watch Videos on Demand & on-demand premium content.
- **High Speed Connectivity:** Up to 100 Mbps bandwidth available on demand to enjoy swift data download and video streaming.
- **3 Tier Security**
- **Gated Community**
- **24 hour CCTV Surveillance** at entry/ exit for continuous monitoring & recording at the Main entrance / Basement / Lift Lobbies.
- **Dedicated Intercom** linking the residence to both the main gate & the lobby.



INDOOR RECREATIONAL FACILITIES

OUTDOOR RECREATIONAL FACILITIES



RESTAURANT



CAFÉ



HEALTH CLUB



SPA



GOLF PUTTING GREEN



2 SWIMMING POOLS



PARTY LAWN



THEME GARDENS



AMPHI-THEATRE



KIDS PLAY



LIBRARY



SQUASH COURT



TABLE TENNIS ROOM



BILLIARDS ROOM



CRICKET PITCH



BASKET BALL COURT



SKATING RINK



YOGA LAWN



JOGGING TRACK



CYCLING TRACK

AND MUCH MORE...

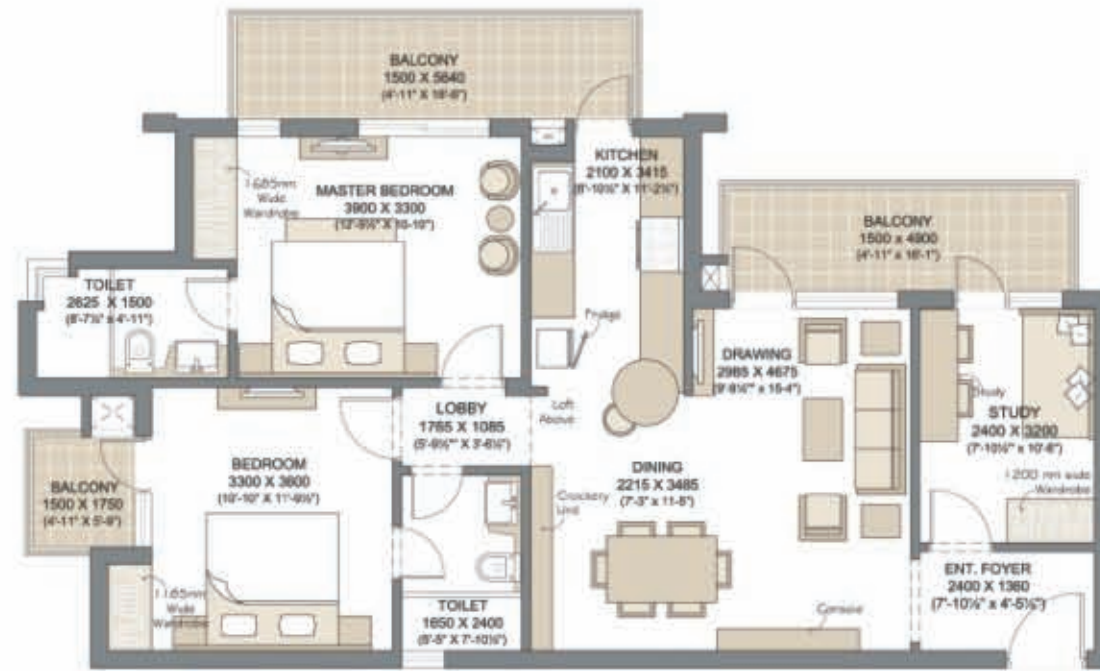


**2 BHK + STUDY**

TOWER G, H, I, J

UNIT NO. 1, 2, 3 & 4

SALE AREA : 1480 SQ. FT. (137.49 SQ. MT.)



**3 BHK + SQ + STUDY**

TOWER C, D, E, F, K, L

UNIT NO. 1 & 4

SALE AREA : 2285 SQ. FT. (212.28 SQ. MT.)



**3 BHK + SQ**

TOWER C, D, E, F, K, L

UNIT NO. 2 & 3

SALE AREA : 1895 SQ. FT. (176.04 SQ. MT.)

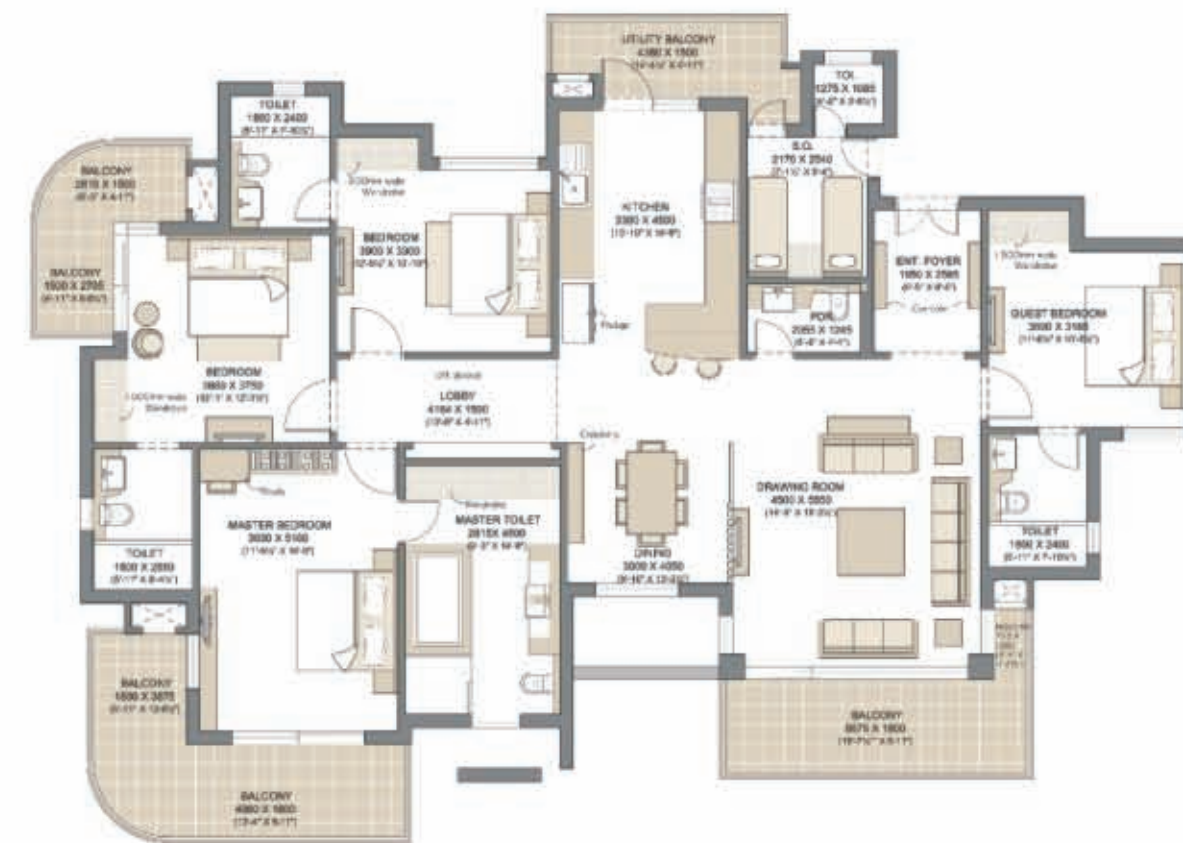


**4 BHK + SQ**

TOWER A & B

UNIT NO. 1 & 2

SALE AREA : 3005 SQ. FT. (279.17 SQ. MT.)





# GREENBURG



METRO ROUTE  
The location map shown above is an artistic rendering and not a legal offering & it may differ from the actual route.

## LOCATED IN SECTOR 86

- Well within the reach of:
  - 20 MINUTES (APPROX.) DRIVE TO IGI
  - 2 MINUTES (APPROX.) DRIVE TO NH-8
  - 3 MINUTES (APPROX.) DRIVE TO PROPOSED METRO STATION
  - 5 MINUTES (APPROX.) DRIVE TO NORTHERN PERIPHERY ROAD



Design & Construction by : LARSEN & TOUBRO  
It's all about engineering.

## BUILDING THE PRESENT. INVESTING IN THE FUTURE!

Microtek Infrastructures Pvt. Ltd. has been at the forefront of ushering quantum leaps in the use of futuristic technologies in real estate. Inspired by the momentous achievements of the parent companies, we commit to deliver engineering and architectural ingenuity and in designing spaces of quality and marquee.

We foresee a future with extraordinary residential, commercial and infrastructural real estate ventures, incomparable in vision and peerless in value. Our aim in very simple terms is to develop long-term relationships by delighting our customers at every touch-point, not just with our superior quality products but also with our top-notch, hassle free services.

## CONSTRUCTION HIGHLIGHTS

- Construction by Larsen & Toubro
- Flat slab construction
- Use of Mivan shuttering (3S system of construction - Speed, Strength & Safety)
- External / Periphery walls of RCC
- More Seismic / Earthquake Resistant Structure
- Monolithic construction of walls, columns, beams & slabs
- Lesser number of joints and reduced leakages
- Parapet walls of RCC for safety purpose
- Construction of Helipad



## PLAYING SECOND FIDDLE IS NOT AN OPTION

For Microtek Infrastructures, ambition is inherited from both the Action Group and the Okaya Group. Added to that is the vision of creating the finest known structures ever seen and a footprint that spans far and wide. That's the force that is propelling Microtek Infrastructures to scale the heights with a one single point of focus-to be at the top, within this decade.

## UPCOMING PROJECTS

- |                                   |                       |
|-----------------------------------|-----------------------|
| <b>Group Housing:</b>             | <b>Commercial:</b>    |
| • Sector 103, Gurgaon             | • Sector 104, Gurgaon |
| • Sector 41, Sonapat, Haryana     | • Sector 81, Gurgaon  |
| • Sector 3A, Bahadurgarh, Haryana | • Sector 95A, Gurgaon |

- |                       |                                    |
|-----------------------|------------------------------------|
| <b>Hospitality:</b>   | <b>IT Infrastructure:</b>          |
| • Sector 103, Gurgaon | • Rajiv Gandhi IT Park, Chandigarh |
| • Sector 111, Gurgaon | • Blue Silicon, Noida              |

Corp. Office : Microtek Infrastructures (P) Ltd., Vatika City Point, 3rd Floor, M.G. Road, Gurgaon - 122002.  
Tel. : +91-124-4417800. Fax. : +91-124-4417810  
[www.microtekinfra.com](http://www.microtekinfra.com)

Disclaimer: All information and contained herein, including but not limited to all designs, layouts, specifications, plans, services, facilities and infrastructure are illustrative and subject to change, without notice, as per prevailing government norms. The features and furnishing shown are representative and do not form part of the Apartment. This brochure is purely conceptual and not a legal offering. Club usage shall be subject to membership condition. Licence No. 104 of 2010 and Approved Building plan No. ZP-705/JD(BS)/2012/3484 Dated 29.02.2012