

M3M POLO SUITES
WHERE THE GENTRY RESIDES

MAGNIFICENCE MAKES WAY,
FOR THE NEW ROYALTY

READY TO MOVE-IN LUXURY RESIDENCES

M3M beckons you to a majestic capitol of Gurugram's royalty. Step through a grand gateway to an enchanting world where the ambience exudes the aura of an aristocratic game. Live an artfully crafted lifestyle at lavishly designed residences, ready to be your own fortress.





M3M Polo Suites are Ready-to-Move-in Limited Edition Ultra-Luxury Residences nestled at the eastern end of M3M Golfstate, a one-of-its-kind golf resort themed residential development.

Inspired by the royal sport, M3M Polo Suites are synonymous with luxury, pedigree and class. Speckled with polo motifs all across and crafted by an international team of experts, M3M Polo Suites exudes elegance and sophistication matched by no other.

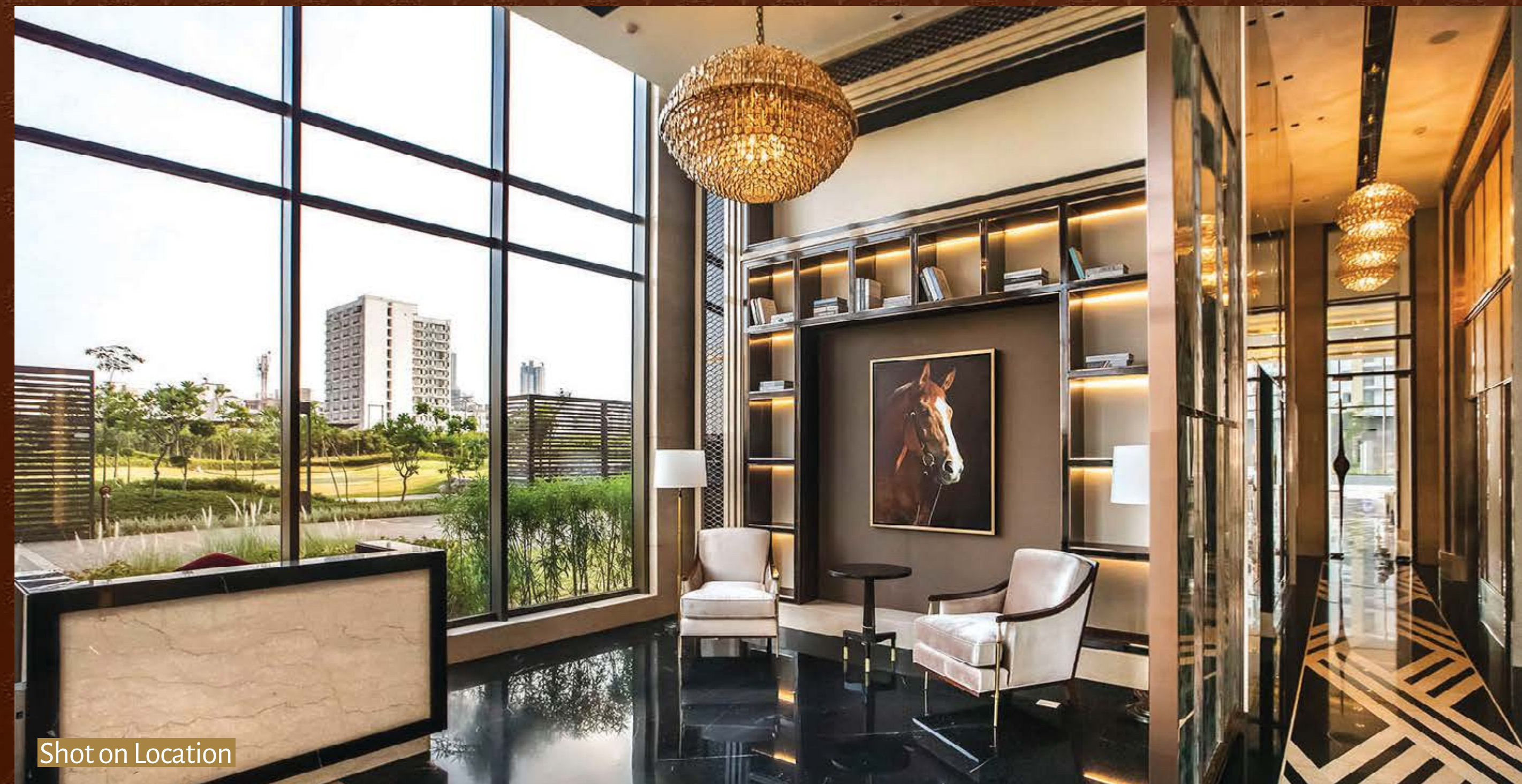
Shot on Location

CURATING A LIFESTYLE FOR THE CONNOISSEURS

- ❖ Exclusive Polo Lounge with contemporary elegance and glamorous décor
- ❖ Unmatched arrival experience as one drives past the Polo Circle and alights at exclusive drop-off areas to walk through stately, well-appointed lobbies
- ❖ White Glove Services - Chef-on-call, Butler-on-call, Bartender-on-call
- ❖ High-end neighborhood - Trump Towers in the vicinity
- ❖ Club Elevate with Sky Sit-out Area, Whiskey Lounge, Private Theatre, Fine-Dining, Multi-Cuisine Restaurant, Business Centre, Banquet, Library, Swimming Pool and much more
- ❖ Located strategically on the high growth corridor of Golf Course Road Extn., Sector 65, Gurugram



Shot on Location



Shot on Location



Shot on Location



Shot on Location



Shot on Location

ENAMOURING HOMES, ENCHANTING INTERIORS

- ❖ 3 & 4 bedroom suites
- ❖ 4010 sq. ft. to 4992 sq. ft.
- ❖ Only 2 apartments on each floor
- ❖ All apartments offer breathtaking views of 9-hole executive golf course
- ❖ Apartments feature clear ceiling height of 10 feet
- ❖ Lavish balconies and decks
- ❖ Fully loaded top-of-the-line, ultra-luxury specifications with Miele kitchen, Duravit bathrooms and B&O speaker
- ❖ Option of intelligent homes



THE POWER YOU ARE ENTITLED* TO

M3M Polo Suites is a dream come true for every polo enthusiast, with various elements of the sport intimately interwoven into the lifestyle. Every resident here is a celebrated member of a close-knit circle and enjoys world-class amenities and exclusive privileges.

- ❖ Riding Lessons with our compliments
- ❖ Access to Exclusive Polo Events
- ❖ Assistance in owning a horse and other maintenance facilities

ABOUT M3M GOLFFESTATE:

M3M Golfstate, of which the distinguished M3M Polo Suites is a part of, is an ode to luxury. It is a coveted address where design finesse is wrapped in an air of sophistication. Set over an expansive 56+ acres, it offers over 101 reasons to live and celebrate life of the highest order.



Shot on Location



Shot on Location



Shot on Location



Shot on Location



Shot on Location



INTERNATIONALLY ACCLAIMED CREATION PARTNERS

ARCHITECTURAL DESIGN
ARCOP, CANADA

INTERIOR DESIGN
BLD, U.S.A.

GOLF COURSE DESIGN
GOLFPLAN, U.S.A.

LIGHTING CONSULTANT
BO STEIBER, SINGAPORE

LANDSCAPING
GCH, U.S.A.

MAINTENANCE
JLL, U.S.A.

EXECUTION
L&T, INDIA



**Call 88824 04404 for M3M Polo Suites Show-Around
To Experience the Extraordinary SkySuites Life, Call 80109 74974**

M3M Golfestate, Sector-65, Golf Course Road (Extn.), Gurugram

www.M3MPolosuite.com

DISCLAIMER: Nothing contained herein intends to constitute a legal offering or legal binding on the part of M3M India Pvt. Ltd. (CIN: U80903HR2007PTC044491) ('Company'). All images (other than actual images) are merely artistic conceptualization and does not replicate the exact product and should not be relied upon as definitive reference. In the opinion of the Company, the words / phrases used are generic in terms. | "M3M POLO SUITES" is a part of 'M3M Golf Estate - Fairway East' Complex which has been developed on a parcel of land as an integral part / segment / constituent / phase of the licensed Group Housing Colony known as "M3M GOLF ESTATE" ('GHC'), located in Sector - 65, Gurugram, Haryana. The colony is being developed in a planned & phased manner on land owned by Manglam Multiplex Pvt. Ltd. and presently admeasuring 22.683 Hectares (56.05 Acres), as amended vide DTCP order Memo No. LC-3281(A+B+C)+LC-3569/JE(MS)/2017/8493-8508 dt. 02.05.2017. The development in "M3M Polo Suites" is governed by and subject to terms & conditions of (i) License Nos. 234/2007 dt. 16.10.2007, 52/2009 dt. 28.08.2009, 35/2010 dt. 06.05.2010; (ii) Occupation Certificate has been accorded vide Memo bearing No. ZP-357/SD (BS)/2017/17788 dt.25/07/2017; (iii) terms and conditions of Application Form and Allotment Letter and Agreement for Sale and Conveyance Deed. Project land and its receivables are presently mortgaged with banks/financial institutions/NBFCs and NOC shall be obtained for the respective allotted unit(s) before giving physical possession of the same to the allottee. M3M Polo Suites' has been developed by the Company. | Dispute with regard to the interpretation of information will be subject to the exclusive jurisdiction of District courts at Gurugram and Hon'ble High Court of Punjab & Haryana, India. | This is not a legal document and cannot be construed as a part of agreement(s) that may be executed by intended / interested Customers. Intended/ interested Customers are requested to contact Company's office for complete details including the approvals, permissions and other terms & conditions of the Project at "M3M Cosmopolitan" Golf Course Extension Road, Sector - 66, Gurugram -122001, Haryana. Intended / interested Customers are further advised to understand the Project details, its payment plans and other statutory approvals before investing in the Project. The decision to invest in the Project shall be deemed to be the own independent analysis based decision of the intended / interested Customer and the Company shall not be responsible for any losses incurred by any intended / interested Customers for any reasons whatsoever. | * Terms & Conditions apply. | 1 Hect. = 2.471Acres, 1 Acre = 4840 sq.yds. or 4046.86 sq. mtrs., 1 sq.mtr. = 10.764 sq.ft.