

M3M COSMOPOLITAN

SOME THINGS ONLY DREAMERS CAN DO

Dreamers are a hard nut to crack. They don't compromise or settle down for a replica of a dream. They want exactly what they need and need exactly what they want. M3M Cosmopolitan is project of a bunch of dreamers. An amalgamation of sophisticated office spaces, retail haven for exciting brands and fine dining experience

Inspired by the magnificence of Los Angeles, M3M Cosmopolitan is spread over a sprawling 3 acres approx. (1.177 Hectares), which not only offers a flurry of world class brands to shop from but also opens doors to office spaces that makes going to office an unforgettable experience.



PARTNER TESTIMONIAL

WALK FAR, WALK TOGETHER

M3M Cosmopolitan is a brain child of many experts. Our partners put their heart and soul together to churn magic with concrete, bricks and imagination. We value their hard work and treasure the relationship we share with them.

ARCHITECTURAL DESIGN

RSP, Singapore

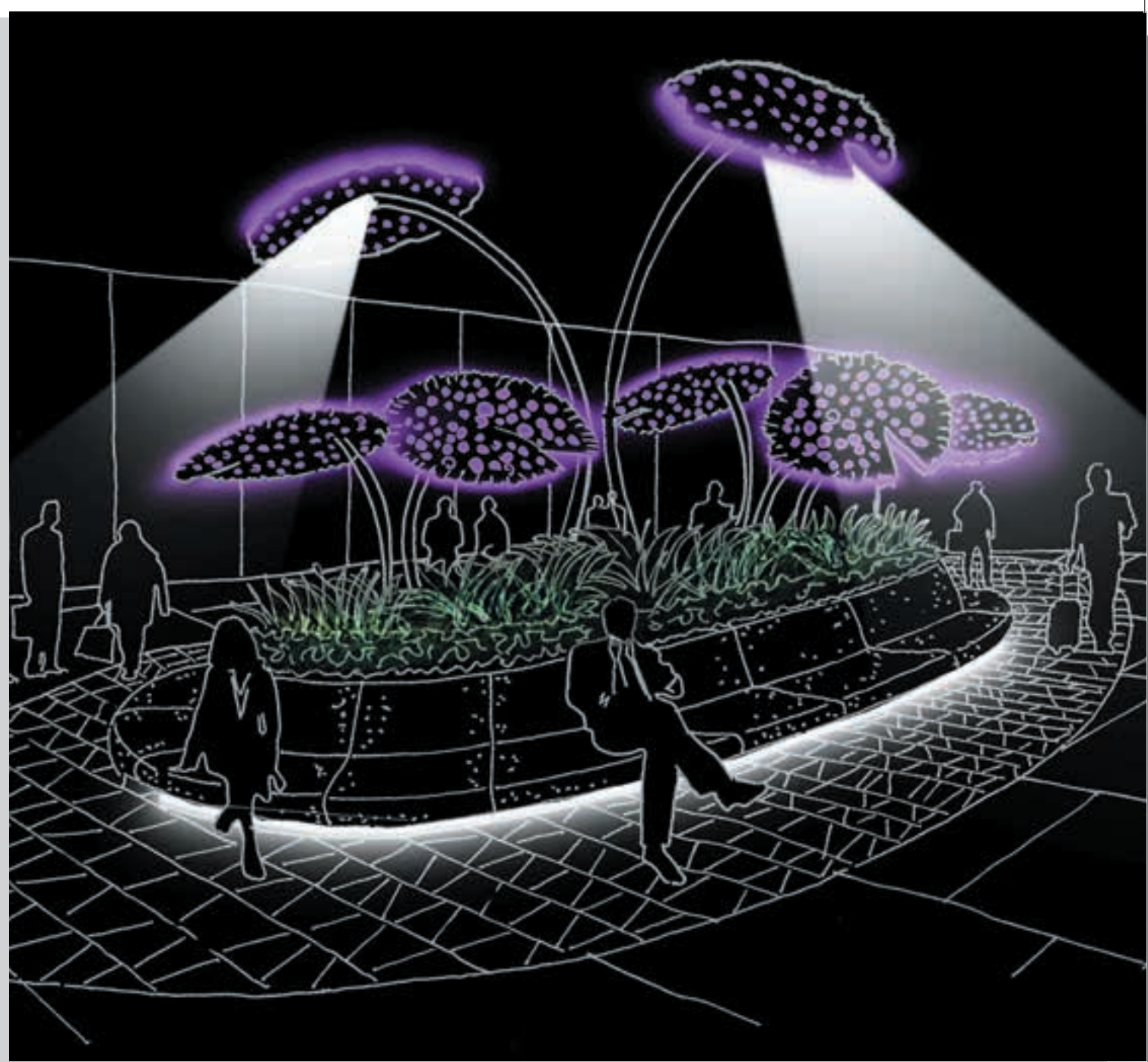
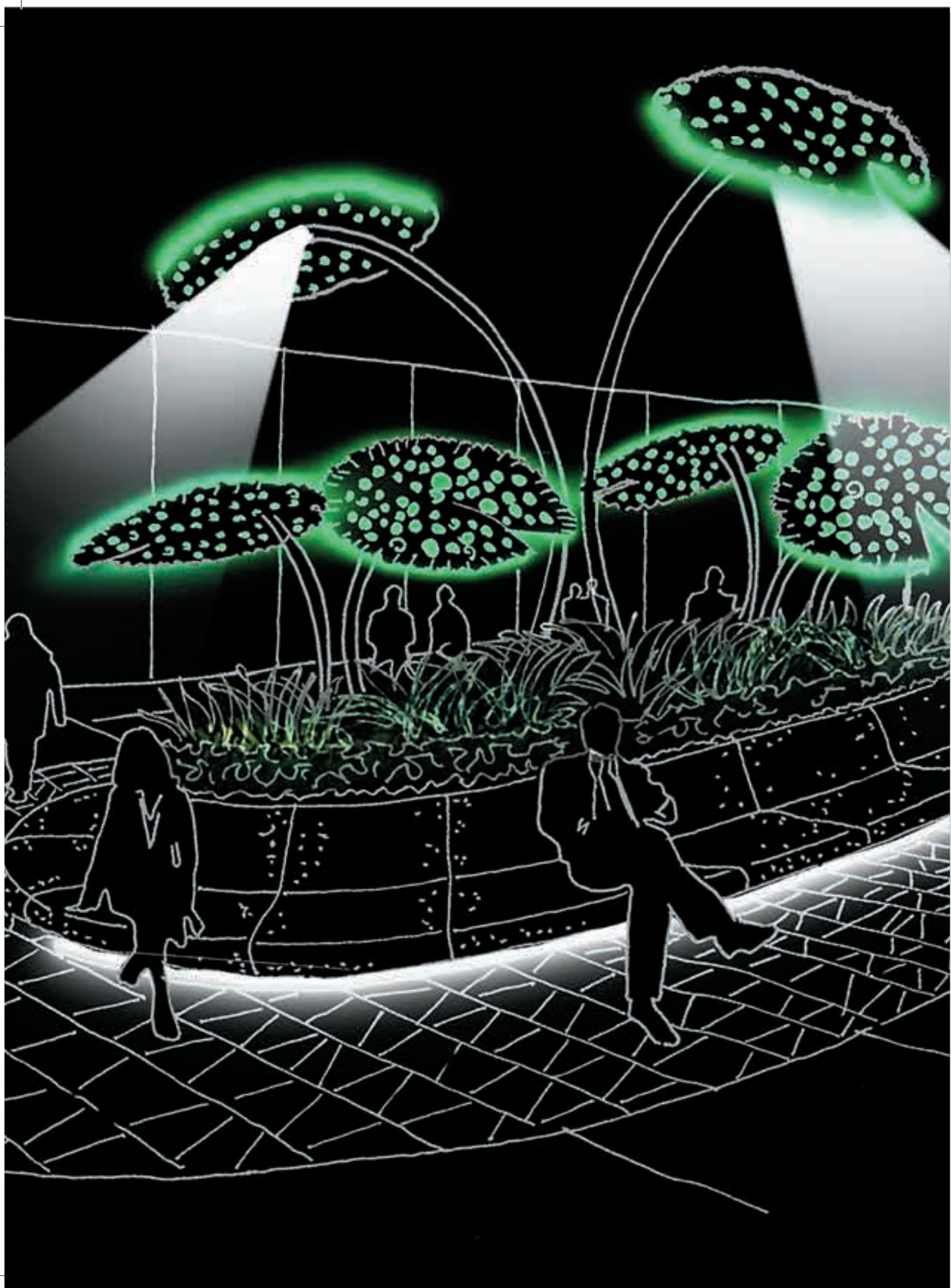
Long journeys often have small beginnings. RSP started out as a small partnership, Raglan Squire and Partners in 1956. It has grown in scope and scale to become one of the largest and most established practices in Asia.

RSP's strength lies in its total commitment to Excellence in Planning and Design and in the delivery of Quality Buildings and Projects. The approach is client-centered and collaborative.

The company is inspired by the passion and architectural demands of the unique project "M3M Cosmopolitan". To mirror the best designs of Los Angeles, New York and blend it with indigenous style was our challenge. The result is a sophisticated system of lives and convenient spaces that allow for a happy productive community.

A dedicated RSP team has been arranged to develop M3M Cosmopolitan using the latest design techniques from the world over. The main motto of this team has primarily been to break the clutter of the high rises and bring forth design concept that not only stands out but also widely accepted. A lot of imagination has gone into the making of M3M Cosmopolitan and with their expertise. The entire project is all ready to set a benchmark in the field of commercial real estate in India.





LIGHTING CONSULTANT

Lighting Design Partnership International, UK.

LDPi is better known as the light king of the UK. With their supreme technology and in-depth knowledge about lighting, they have illuminated many airports, atriums, auditoriums, bridges, hotels, offices, shopping centers and exhibitions. LDPi excels at bringing a mundane place to life just by using lights. We're grateful for their undying support in our project.

WHAT THEY ARE DOING FOR M3M COSMOPOLITAN.

The 'M3M Cosmopolitan' logo is lit from within to create a bright statement & visual identity which marks entry into the site. Also defining the entrance is the feature central wall which is uplit in a signature colour to highlight & draw interest to the site, whilst also creating a backdrop to feature palm trees in this area. Integrated downlighting to all gateways to silhouette & pronounce framework members.

- To enhance the large scale 'lily pads' at pedestrian scale a linear LED source is incorporated within the structure to allow the leaf to glow & offer optional colour change ability
- Illuminated graphic line wrapping around Tower perimeter lighting the soffit
- Integrated side lights to wash pergola edges and integrated coloured light wall luminaires
- For additional functional lighting a supplementary larger 'lily' has been added to act as a street luminaire for general illumination whilst offering the same sculptural aesthetic to the planters
- Concealed linear lighting is added to both seating & skirting detail to define their organic shapes
- Facade cladding with Integrated graphic lines of light to create visual pattern to facade areas



LANDSCAPE ARCHITECTS

Element Design Studio, Singapore.

Element Design Studio has cast a shadow that's as grand as their projects. Under the inspiring leadership of Mr. Gregory Kunak, Element Design Studio has delivered many renowned projects which are today considered as landmarks. Some of his landscaping designs includes names like The Taj Palace, New Delhi, Renaissance Hotel-Malasiya, Unitech Golf & Country Club Golf Course and many more.

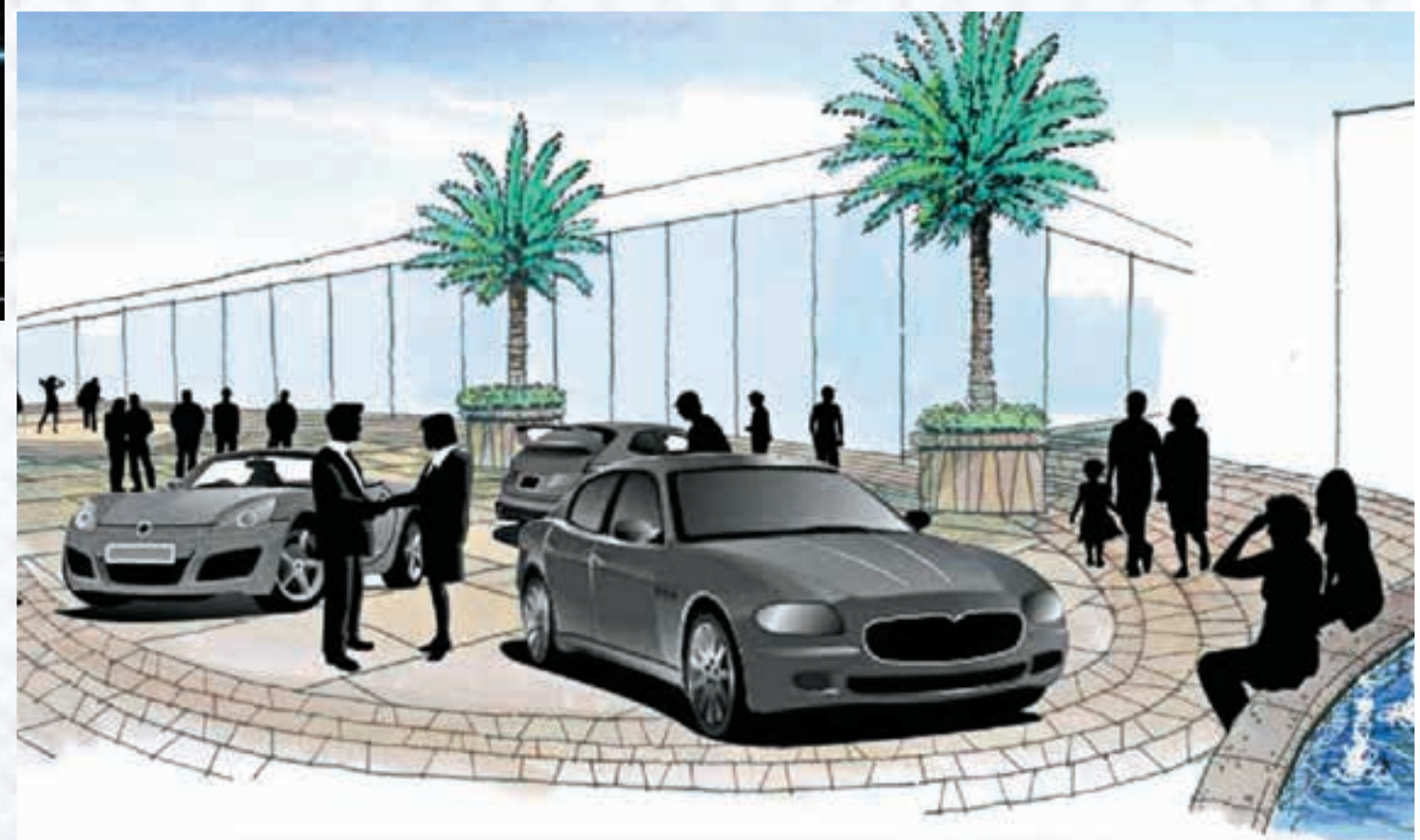
WHAT THEY ARE DOING FOR M3M COSMOPOLITAN.

The entire setting of M3M Cosmopolitan is as exquisite as a dream. Through the use of simple, yet refined and elegant materials, the landscape is integrated and enhanced by the clean lines of the architecture. Bold and aesthetic planting statements at the arrival, hardscape treatments, decorative features and selective water features at key areas are harmoniously integrated into the property and offer a variety of settings and activities for visitors and club members.

RETAIL CORRIDOR

- The use of overlapping, visually strong paving patterns defines the retail corridor
- Small raised stage accommodates promotions, functions, gatherings and performances
- Water feature with bubblers encompasses the lift
- A soft palette of variety of plant species located throughout the project that offers strong visual aesthetic





M/S CONSOLIDATED CONSTRUCTION CONSORTIUM LTD.

Without Consolidated Construction Consortium Limited's (CCCL) support M3M Cosmopolitan would have been just a beautiful dream. CCCL is an ISO-certified company with a turnover of around Rs. 21.98 billion. It has a significant presence in India, with offices in Chennai, Bangalore, Hyderabad, Delhi, Kolkata, Ahmedabad, Pune and Trivandrum. An office recently opened in Middle East marks the beginning of its international visibility.

WHAT CCCL IS DOING FOR M3M COSMOPOLITAN

- Delivery of engineering-intensive and innovation-led turnkey construction services
- Competence in the industrial, commercial, infrastructure and residential sectors
- Best-in-class shuttering material and concrete technology
- Providing technology contemporariness leading to a high uptime







M3M WOODSHIRE



AIRPORT

TO DELHI

Nelson Mandela Road

New Link Road

MG ROAD

M3M CORPORATE OFFICE

THE EXPERIA SALES GALLERY

TO FARIDABAD

TO PATAUDI

TO JAIPUR

- M3M MERLIN
- M3M ESCALA
- M3M ONE-KEY RESIDENTS
- M3M URBANA
- M3M URBANA BUSINESS PARK

- M3M COSMOPLUS
- M3M POLO SUITES
- M3M GOLF ESTATE
- M3M PANORAMA SUITES

DWARKA EXPRESSWAY

NH-8

NH-8

Sohna Road

Golf Course Road

Golf Course Extn Road

NAJAFGARH ROAD

Diplomatic Enclave

Delhi Haryana State Border

Toll Plaza

Cyber City

Chatterpur Metro Station

Delhi Haryana State Border

New Link Road

DPS International School

Medanta-The Medi City

Hajeey Chowk

HFCO Chowk

Manul Udyog

Harrow Phase

Harrow Phase

Harrow Phase

Harrow Phase

Harrow Phase

Harrow Phase

Harrow Phase

Harrow Phase

Harrow Phase

Harrow Phase

Harrow Phase

Harrow Phase

Harrow Phase

Harrow Phase

Harrow Phase

Harrow Phase

Harrow Phase

Harrow Phase

Harrow Phase

Harrow Phase

Harrow Phase

Harrow Phase

Harrow Phase

Harrow Phase

Harrow Phase

Harrow Phase

Harrow Phase

Harrow Phase

Harrow Phase

Harrow Phase



MAP NOT TO SCALE

LOCATION

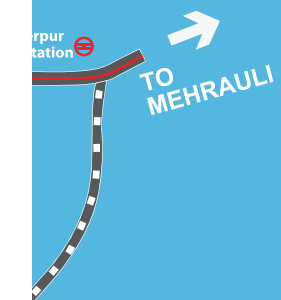
THE EPICENTRE OF MAGNIFICENCE

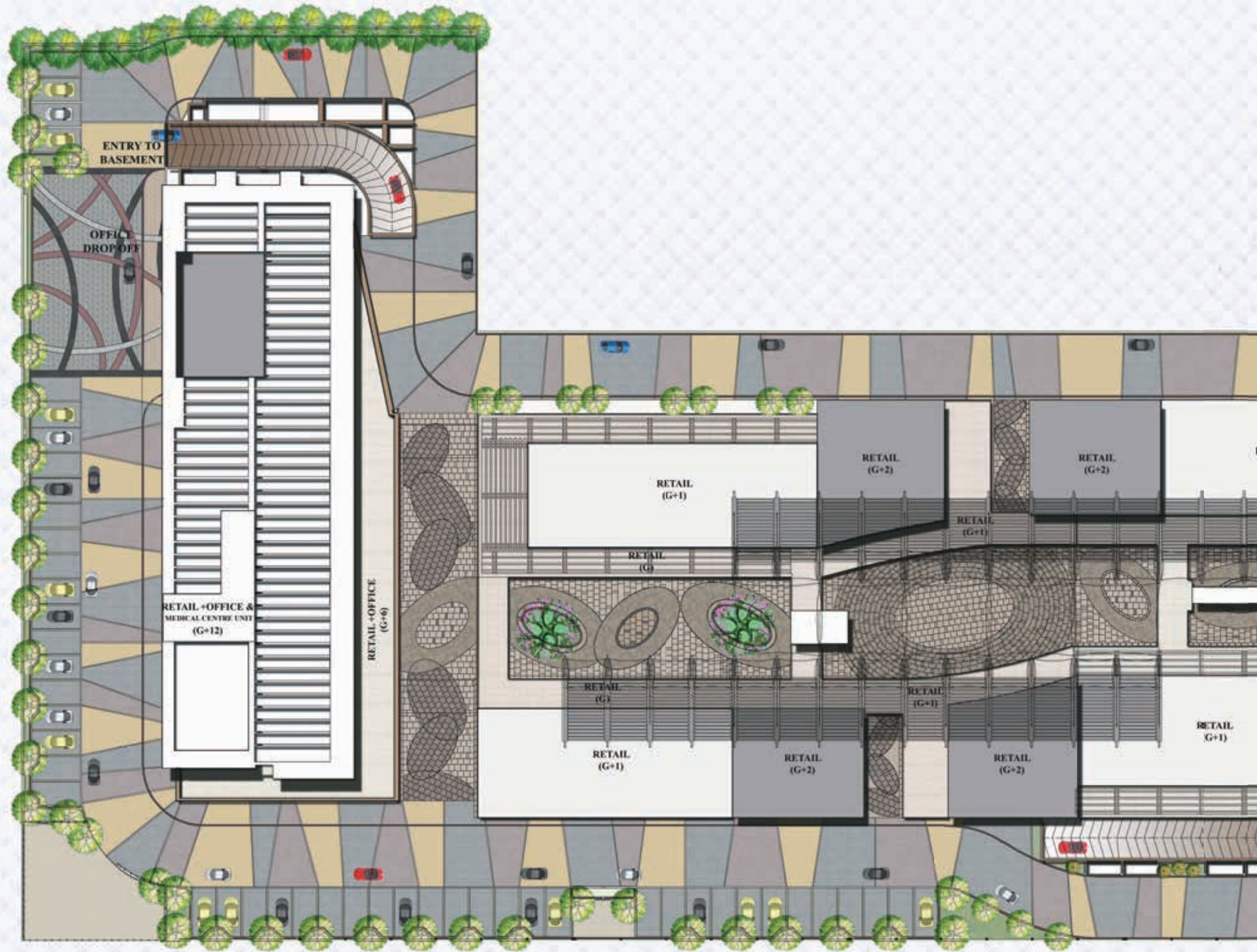
Geography has always been our master. It has pushed us, moved us and most importantly transformed us to become what we always wanted to be. So it's imperative to be at the right place at the right time and M3M Cosmopolitan is a classic example of that.

Located at one of the finest business cum recreational hub of the city, M3M Cosmopolitan sends a strong signal to those who want to embark on a journey that's not only enriching but also rewarding.

WHY IT'S A PLACE LIKE NO OTHER?

- Located at Sector 66, just a walk away from Golf Course Extension Road (SPR)
- More than 5 lakh families expected to move in by next 3 years
- Quick access to South Delhi, owing to -
 - a) Existing link connecting M. G. Road and South Delhi
 - b) Future link connecting Nelson Mandela road in Vasant Kunj in delhi to Mehrauli Road in Gurgaon through the biodiversity park
 - c) A 90 mtr. wide road link from Andheria Mor, Delhi to Gurgaon-Faridabad Road through Mandi and Gwal Pahari
- Proposed Metro Corridor in close vicinity

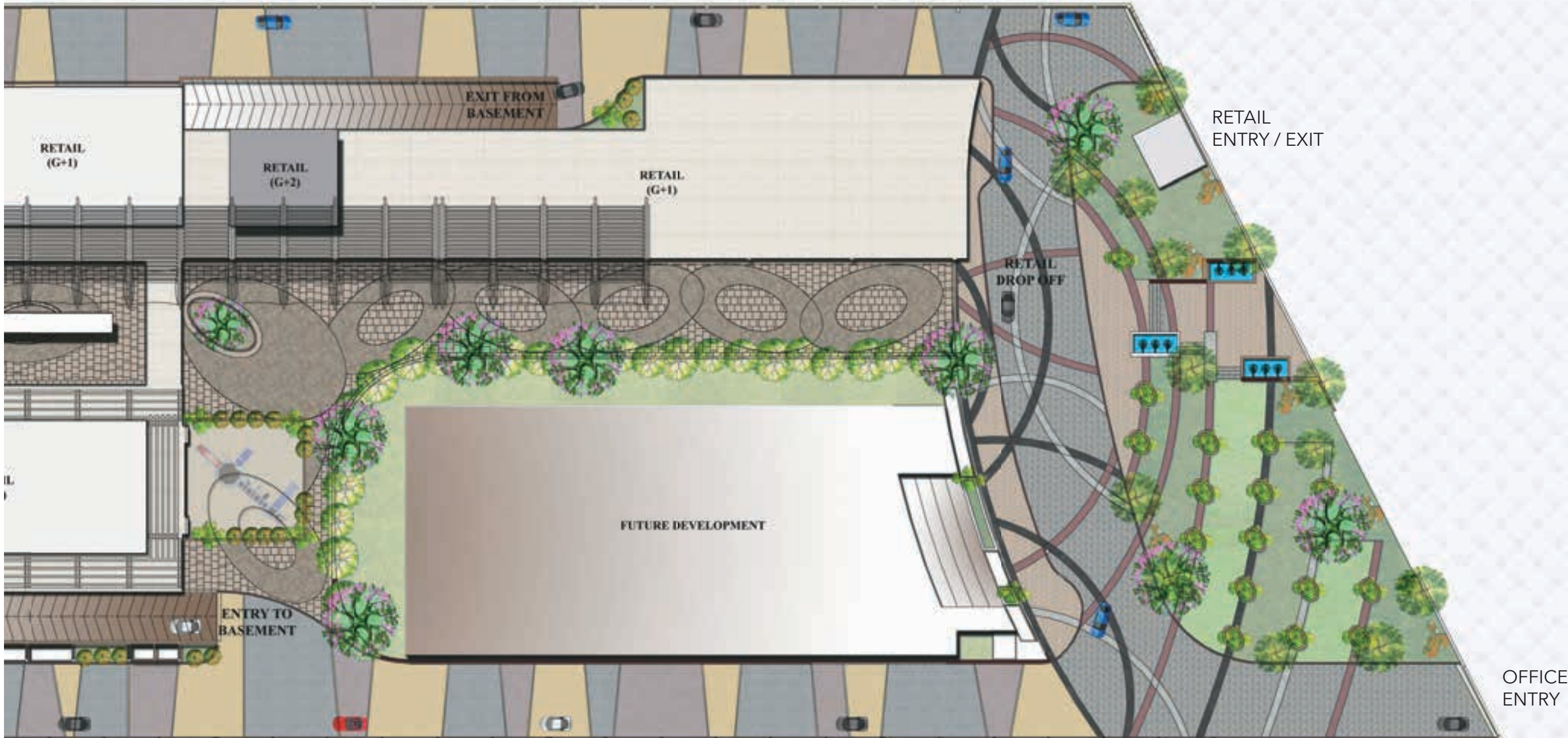


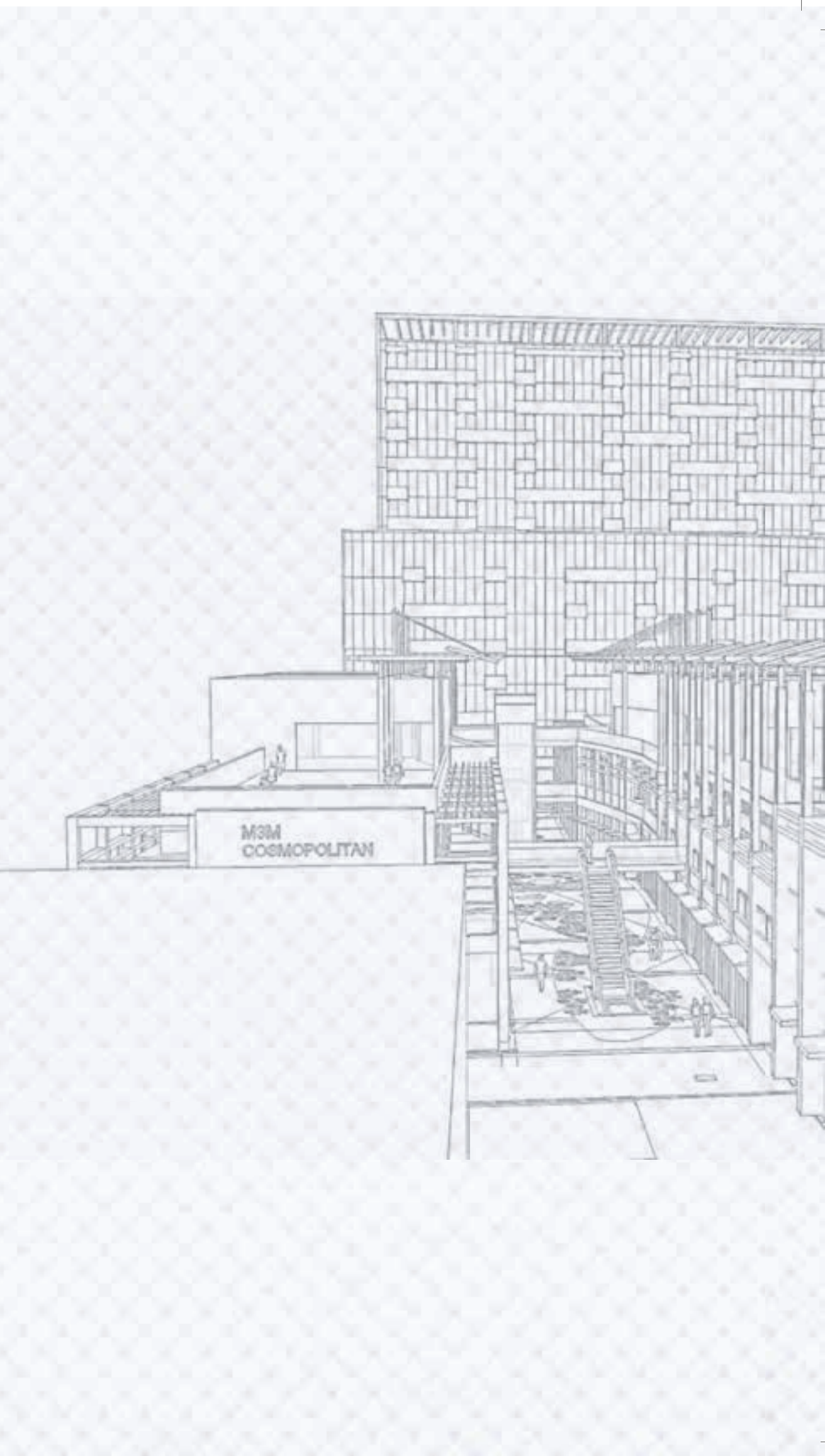


M3M COSMOPOLITAN SITE PLAN



MAP NOT TO SCALE







FAR FROM THE HUSTLE-BUSTLE,
CLOSE TO YOUR HEART.

M3M

COSMOPOLITAN™

STYLISH RETAIL & COMMERCIAL HUB



M&M
COSMOPOLITAN

Barbery

Neina

EVS



MIXED USE DEVELOPMENT

ONE FOR ALL, ALL FOR ONE

Modern markets bank largely upon the multidimensional capacity of a project. It's no longer dependent on the "Power of one". The International and National market is teeming with projects that offer only one type of facility.

M3M Cosmopolitan is a commercial development. It is advantageous for both developers and buyers. From a developer's perspective, the primary benefit of mixed-use projects is that they capture in various segments of Real Estate, Commercial Retail, Restaurant and Medical Centre. Such projects are Buyers' paradise. If planned properly and marketed properly, it can become a treasure trove for the investors as well as for the end users. This is because of lower travel time between residences, shopping centres and workplaces.

M3M Cosmopolitan is a project that envelopes every necessity of a modern family. It's not only strategically placed but also self-sufficient in every way.



M3M COSMOPOLITAN A RETAIL WONDER

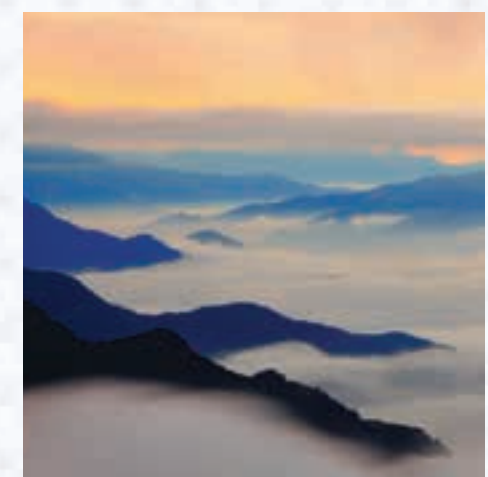
It's amazing what cement, brick and machines can do when you add a little imagination to it. One tangible example of such brilliance is M3M Cosmopolitan and like every known monument and building, this too wasn't built in a day.

M3M Cosmopolitan is strategically located on high growth corridor of Golf Course Extension Road, Sector 66, Gurgaon. It's spread over 3 acres approx. (1.177 Hectares). The project has an ideal commercial project mix of Retail, Anchor Store, Restaurant, Office & Medical Suites.

WHAT MAKES M3M COSMOPOLITAN SPECIAL?

- Permanent Finished Façade
- Central Plaza with Sit-Outs & Food Kiosks
- Best Commercial Project Mix with Double Height Retail, Retail, Anchor Store, Restaurant, Office & Medical Centre.
- Unique Architecture promoting "Los Angeles-like" design offering Permanent Finished Façade, Heat Resistant Glass, Terrace Restaurants, Rich Landscapes and Large Store Fronts

- Exclusive Retail Promenade with rich landscaping providing a delightful shopping experience for the Patrons
- Shading of the Central Plaza & Pedestrian Walkways through Pergola Roof Design and Misting Facility in the Walkways to provide a comfortable shopping experience for the Patrons
- Provision for wet points & Split AC in all the units (retail)
- Video Surveillance in Basement Parking, Basement & Ground Floor Lobbies and Boom Barriers at Entry & Exit Points
- 100% Power Back-Up with suitable diversify and load factor
- Modern Fire Detection and Suppression Systems





OFFICE SPACES THE FUTURE HAS JUST ARRIVED

M3M Cosmopolitan takes pride in its office spaces. Green surroundings, futuristic designs, sophisticated amenities, grand architecture and the enchanting view from each floor. All these qualities makes M3M Cosmopolitan an ideal place for work in.





WHAT MAKES M3M COSMOPOLITAN SPECIAL?

- Main lobby equipped with directional signage
- Provision of cable TV / IPTV / DTH
- Provision for Optical fiber connectivity
- Video Surveillance in the basement parking
- Modern fire detection and suppression system
- High speed elevators
- Split ACs provided in the Office Units. Duct able Split AC with ceiling hung Indoor unit & outdoor unit placed in adjacent balcony
- Lobby Finish: Combination of Stone and Painted Surfaces
- Fully Finished Common Toilets with Modern Fittings & Fixtures
- Dedicated Drop off & Entrance Lobby for Office units



ROOF TOP RESTAURANT

A TREAT FOR EVERY PALATE

Fine dining on mind? No worries. Exquisite terrace restaurants will caress the palate of all the food enthusiasts who walks in the door. An ambience that transcends to the world where serenity takes over the muteness of every passing moment and makes way for an experience that lasts an eternity.

Fine dining terrace restaurants await to make every evening of their visitors a memorable one.

Laced with luxuries like -

- Vintage Wine collection
- World Class Chefs and mouth watering cuisines that takes its visitors on a ride of a lifetime



M3M COSMOPLUS THE LUXURY OF CARE

M3M Cosmoplus offers world-class medical facilities under one roof. The Medical Centre has a unique combination of medical practitioners from various fields, providing professional & efficient services.

OTHER SPECIAL FEATURES OF COSMO PLUS

- Fully Finished Suites, with 2 Design options
- Finished with flooring, False Ceiling, Cabins, Wash Basin, Waiting Lounge and Powder Room
- Air Conditioned Suites with Ducted Split Units
- Access to the Site from 60 meter wide Sector road between Sector 65 & 66
- Occupants Directory prominently displayed in the Ground Floor Lobby
- Space for Diagnostic lab and Pharmacy in the same complex
- Visitor Parking For Customers/Patients
- Public Toilets On Each Floor



SPECIFICATION

RETAIL

RETAIL SHOPS	Retail Floor- Ground, First & Second Large Store Front and glazing area for retail units Arcade along all retail units Dedicated signage areas for all units as per design Restaurant with terrace-dining provided on second floor	FIRE SAFETY Wet Riser Hose Reel Sprinklers Fire Extinguishers External Fire Hydrants Fire Detection System	Provided as per norms Provided as per norms Provided as per norms Provided as per norms Provided as per norms Provided as per norms
STRUCTURE	RCC slab and column structure with masonry partitions		
LANDSCAPE	Richly landscaped central plaza Pedestrian plaza designed with seating areas and food kiosks Dedicated drop-off zone and entrance for retail On-site parking areas with Lush canopy trees and landscape features	HVAC AC system Ventilation & Exhaust	Space provision for split AC units Provision for common toilets and basements
FINISHES Exterior Lobbies Basement Tenant Floor Finish Common Toilets	Combination of stone and painted surface Combination of stone and painted surface Broom finish concrete Concrete floor Finished toilets with modern fitting and fixtures	ELECTRICAL Distribution Metering Lighting Protection & Earthing Pits	Provision of cable upto tenants distribution board Tenant load will be metered Provided
PARKING	Multi-level basement for parking and services. Adequate surface parking Provision of access control and CCTV surveillance	DIESEL GENERATORS	Fully automatic backup provided with suitable diversity and load factor for lighting, power and AC Provided with PLC based auto load manager
SECURITY CCTV Surveillance Manned Security	Basement parking, basement & ground floor lobbies Boom barrier at all vehicular entry & exit points	SIGNAGE Internal External	Main lobby equipped with tenant directory and directional signs External signage as per developers' design and conditons
		COMMUNICATION Cable TV connection Voice Data	Provision for cable TV / IPTV / DTH

SPECIFICATION OFFICE

OFFICE SUITS	Office floor- second to sixth floor	HVAC	
STRUCTURE	RCC slab and column with masonry partitions Passenger & service elevator Staircase connecting office levels	AC System	Split AC units provided
LANDSCAPE	Richly landscaped central plaza Pedestrian plaza designed with sitting areas and food kiosks Dedicated drop-off zone and entrance for office	Ventilation and Exhaust	Provided for common toilets and basements
FINISHES		ELECTRICAL	
Lobbies	Combination of stone & Painted Surface	Distribution	Provision of cable upto tenants distribution board
Basement	Broom finish concrete	Metering	Tenant load will be metered Provided
Tenant Floor Finish	Concrete floor	Lightening Protection & Earthing Pits	Provided
Common Toilets	Finished toilets with modern fitting and fixtures	Emergency Lighting	Emergency lighting in selected common area
PARKING	Multi-level basement for parking and services. Adequate surface parking. Provision of access control and CCTV surveillance	DIESEL GENERATIONS	
SECURITY			100% automatic backup provided for lighting, power and AC Provided with PLC based auto load manager
Video Surveillance	Basement parking, basement & ground floor lift lobbies	SIGNAGE	
Manned Security	Boom barriers at all vehicular entry & exit points	Internal	Main lobby equipped with tenant directory and directional signs
Life safety	Provided as per norms	COMMUNICATION	
Wet Riser/Hose Reels /Sprinklers/ Fire Extinguishers/ External Fire Hydrants		Cable TV Connection Voice Data	Provision for cable TV / IPTV / DTH

INVESTOR'S ADVANTAGE

M3M Cosmopolitan is not just a project, but a gateway to the future. Its impeccable workmanship, strategic location and flawless execution makes it one of the most sought-after investments of the town.

It offers a buffet of luxuries that includes:

- Golf Course located at a stone throw distance from the project
- Excellent connectivity through multiple Inter state highways
- Projected residents of 5 lakh families expected to move in the next 3 years
- 3 acres approx. (1.177 Hectares) of absolute bliss with one stop solutions for retail, office space and fine dining

CLOSE PROXIMITY TO GOLF COURSE

UPSCALE SHOPPING HUB







M&M
COSMOPOLITAN

R PEUL MMITH BURBE

Neina

Steyles P+S

Alen Soper

Lee Ter

LULU ESCAL

ESCALER PRADA Orange ZORO

M3M – THE TRIAD OF EXCELLENCE

The Group, M3M stands for "Magnificence in the trinity of Men, Materials and Money." Simply put, the organisation has a philosophy that strives for excellence culminating in absolute magnificence in every aspect of its character, ethics and way of doing business.

What the Group stands for is in sync with our slogan of "Our Expertise, Your Joy". The organisation firmly believes in achieving brilliance through true professionalism and cutting edge technology.



THE WORLD OF M3M



A constant pursuit of joy in creation of a happy and networked residential society that is rewarding to the families and completely secure.



Enhancing enlightenment of minds through holistic education and world class schools and institutions.



Forming prime commercial & retail spaces, most luxurious shopping destinations and the most sophisticated offices.



Establishing a global footprint through international associations and commendable tie-ups for technologically superior and world class infrastructure.



Redefining the aura of hospitality through unmatched services and unfathomable care to provide the utmost comfort and a fulfilling experience.



M3M CARE is the human face of the company that embodies the group's CSR activities. We believe in giving back to our workers, our community and to our natural surroundings.



Developing the future, through world class and truly global workspaces for IT/ITES & SEZs.

DISCLAIMER

Please read carefully.

The information contained in this Brochure ("Brochure"), is merely informative and unless otherwise expressly provided, all contents are for general information purposes. Nothing contained herein intends to constitute an offer/ invitation to offer or sale. The reader hereby accepts and agrees to be bound by and comply with these legal terms of use.

This Brochure contains proprietary information, exclusive to the brand "M3M" or M3M India Limited ("Company"). All images on the Brochure, including text, photo's, illustrations, graphs, logos, trade and services brands, are fully owned by Company and are protected by copyright, trademark rights and other intellectual property rights under law. The contents, and any information or opinion on the Company's projects, products and business, may not be reproduced, transmit (by any means), modified, sold, circulated, shared or otherwise provided, in whole or in part, to any other person or entity store, archive or in any other way use for any public or commercial purpose without the Company's explicit consent. Company reserves its right to revoke any such consent, without prior notice. Any unauthorized review, use, disclosure, dissemination, forwarding, printing or copying of any page, information, brochure or any action taken in reliance on the information is strictly prohibited and may be unlawful.

The Company does not warrant the completeness, accuracy, correctness of the information available herein and the readers are advised to verify any/ all information from the Company before claiming any reliance on it. The information and contents herein, including all designs, layouts, specifications, plans, services, facilities and infrastructure are illustrative; and subject to government norms, and may be changed without notice. All areas and figures are indicative and the units mentioned herein are subject to availability. Further, the contents are subject to terms as stated in the Application Form and Buyer's Agreement. License No. 43 of 2009 dated 01.08.2009 accorded to M/s Afresh Builders Pvt. Ltd. for setting up a Commercial Colony over 1.177 Hectares (2.943 Acres) of Land. Building Plan Approval No. ZP-571/JD(BS)/2012/3174 dated 23.02.2012. Copies of approvals are available for inspection at Developer's office at Paras Twin Tower, Tower B, 6th Floor, Golf Course Road, Sector 54, Gurgaon, Haryana. •1 hectare = 2.471 acres, • 1 Sq. Mtr. = 10.764 Sq. Ft.

Some of the information may give an impression of forward looking statements even though they are not meant or intended to be so and customers dealing with such information are required to undertake full and independent analysis thereof.

In no event will the Company be liable to the reader or any third party for any incidental, consequential, indirect, special, or exemplary damages, including, without limitation, loss of business, lost profits, business interruption, loss of business information or any pecuniary loss, arising out of, in connection with, or relating to the use or performance of the information based out of or contained herein.

The Company and any of its affiliates, subsidiaries, officers, directors, employees or agents provide the Brochure and the Information on an "as is" basis and do not make any express or implied warranties, representations, endorsements or conditions with respect to the Brochure or the Information, including without limitation, warranties as to merchantability, operation, non-infringement, usefulness, completeness, accuracy, current validity, reliability and fitness for a particular purpose.

Image source: M3M group and Shutterstock.com.

Content source: M3M group and project partners.



M3M Biz, the retail and commercial arm of M3M Group has created quite a few exemplary commercial hubs with refreshingly retail spaces, offices, complexes and premium luxury service apartments. M3M Urbana and M3M Cosmopolitan are located in Gurgaon's most prime locations - sector 66 and sector 67. These sectors are planned to have a high density of affluent residents and a destination for corporate offices, luxury hotels and a premium service partments. Close to the ever expanding Delhi - Gurgaon Metro line and approximately 30 minute drive from Delhi's International airport, along the NH8, sector 66 and 67 offer the best and most complete 'live, work and shop' destination

OTHER PROJECTS OF M3M

